

# Compact current transformer CT27, class 1

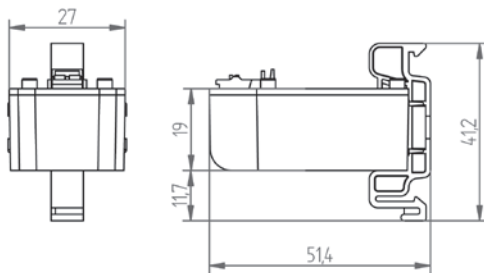
## Compact innovation

- Compact current transformer
- Particularly well suited to digital measurement devices
- Current transformer per IEC 61869-2
- Transformation ratios 35/1, 64/1 A, class 1
- Primary conductor feed-through window for insulated cable up to  $\varnothing$  7.5 mm
- For use on a 3-phase circuit breaker with phase spacing of 17.5 mm
- DIN rail mounting (35 mm) via rail clamps (optional)
- Plug-in type CTs (Lego concept)



## Dimension diagrams

All dimensions in mm



## Technical data

Technical data	
<b>Environmental conditions</b>	
Position of installation	Indoor usage; only for insulated conductors
Ambient temperature	-10 ... +55 °C
Relative humidity	5 ... 85 % (no condensation)
Protection class	IP20
<b>Application conditions</b>	
Standard	IEC 61869-2
Thermal short time rated current	60 x I <sub>n</sub> / 1 s
Thermal continuous current	100 %
Rated isolation level	0.72 / 3 / kV
Rated frequency	50 / 60 Hz
Insulation class	E (120 °C)
Cable feed through window	$\varnothing$ 7.5 mm
Secondary conductor (spring clamps)	Wire cross section: 0.2 ... 1.5 mm <sup>2</sup> ; rigid, flexible

Current transformer CT27 – Class 1							
Type	Primary current in A	Secondary current in A	Power in VA (at the terminal)	Max. diameter, primary conductor in mm	Dimensions in mm (W x H x D)	Weight (kg)	Item no.
CT27-35	35	1	0.2	7.5	27 x 46 x 23	0.05	<b>15.03.080</b>
CT27-64	64	1	0.2	7.5	27 x 46 x 23	0.04	<b>15.03.081</b>
<b>Accessories</b>							
Mounting clip	For DIN rail EN 50022-35, suitable for CT27-35 and CT27-64				41 x 14 x 27	0.001	<b>09.09.010</b>